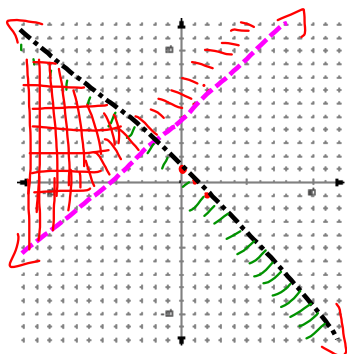


## 3-3 Graphing a System of Linear Inequalities

ex 1:  
 $y > x + 5$   
 $y < -x + 1$

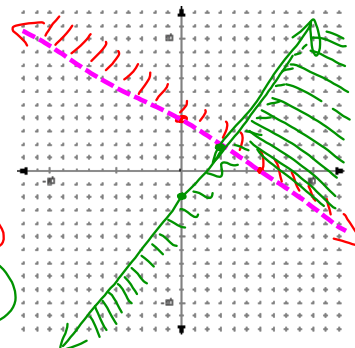


ex 2:  
 $2x + 3y > 12$   
 $-3y \geq 6 - 4x$

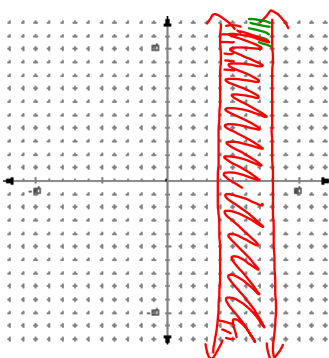
$$3y > -2x + 12$$

$$y > -\frac{2}{3}x + 4$$

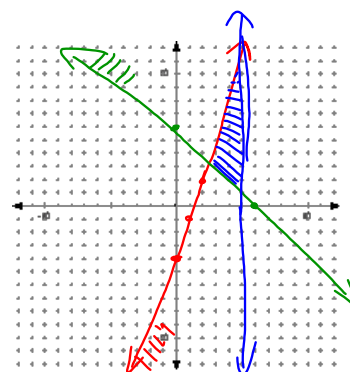
$$y \leq -2 + \frac{4}{3}x$$

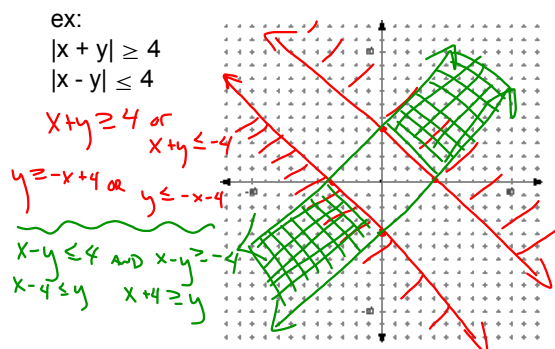
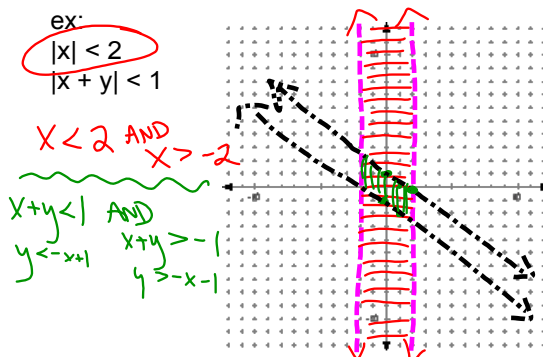
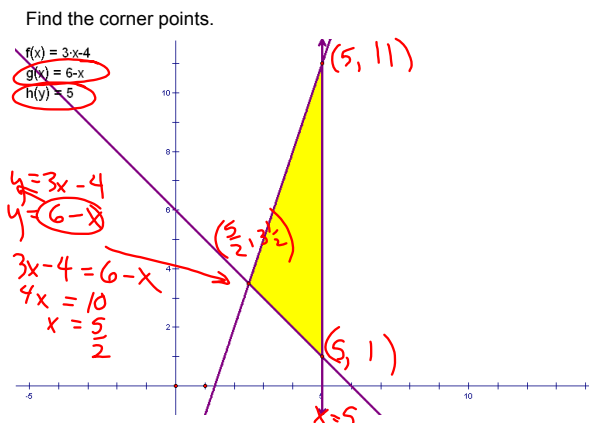


ex 3:  
 $4 \leq x \leq 8$   
 $4 \leq x$  AND  
 $x \leq 8$



Do:  
 $y \leq 3x - 4$   
 $y \geq 6 - x$   
 $x \leq 5$





HW  
p126 12, 15, 17, 20, 21, 24, 28